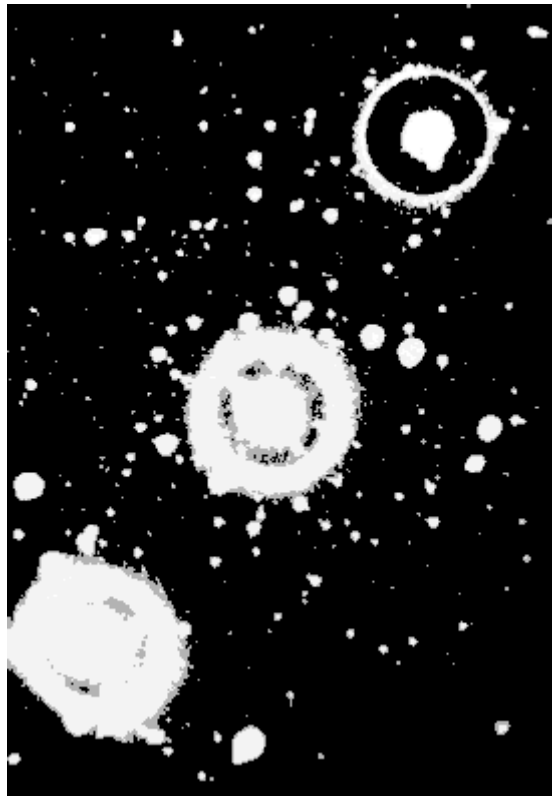


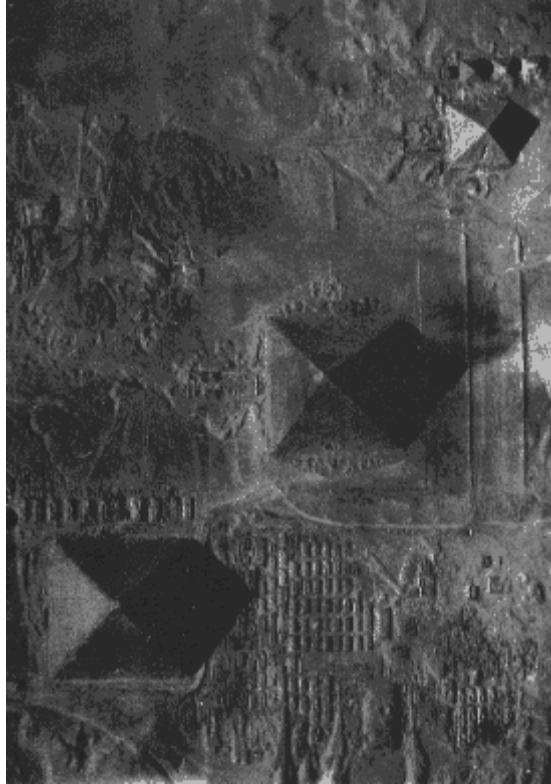
Egypt, Orion, and Heaven on Earth

By Joseph Rees

The following picture is a telescopic photo of the constellation known as Orion's belt. Notice that these three stars seem to be in almost perfect alignment, but not quite. The uppermost star is just slightly left of the axis line of the lower two. It also appears to be of lesser magnitude:

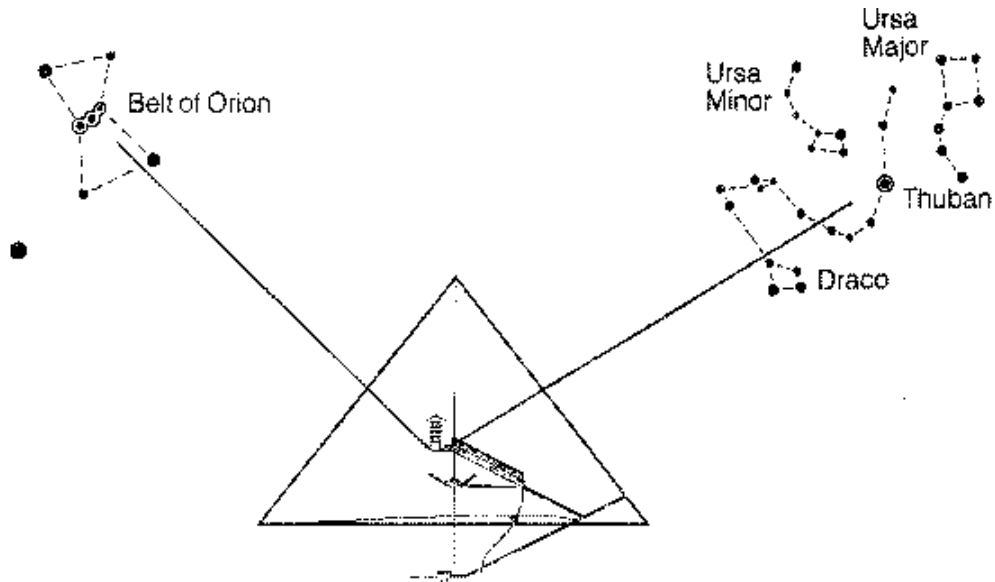


Next please notice this arial picture of the Memphite Necropolis Site at Giza, south-west of Cairo. Look carefully at the way the Pyramids are aligned:



At first glance they seem to be imperfectly positioned. Classical Egyptologists maintain that this was either a mistake or a result of the terrain in the Giza Plateau. Compare this to the image of the Belt Stars of Orion and things become a little clearer. Far from being a mistake, the Pyramids are aligned almost exactly as the Belt Stars appear!

This incredible discovery is strengthened by yet another coincidence. Within the walls of the Great Pyramid of Giza lie many mysteries. Two such mysteries are the hollow shafts that extend from the King's and Queen's chambers. These shafts are still unexplored in their entirety. Many have speculated about their purpose. Through the use of a computer system the stars were able to be placed in the sky as they had been during the Great pyramids lifetime. Below is a schematic of where in the stars these two shafts led. The computers measurements and calculations quickly showed that the architects had intended exact destinations.



The Great Pyramid of Giza in cross-section

Alignments of shafts to stars c.2600BC as discovered by A. Badawy and V. Trimble in 1964

The Egyptians believed that Orion was God. They also believed that God could be seen in the heavens. The belt of Orion was, therefore, chosen as the configuration for their pyramid temples in order to represent that these temples were to be heaven on earth. The shafts within the Great Pyramid of Giza were directional guides showing the way to Orion and his wife Thuban. (The King's Chamber shaft being directed at Orion and the Queen's Chamber at Thuban.) Another fact interesting to the LDS church is that the Great Pyramid consisted of three inner plateaus or levels, as can be seen above.